

**BAKER**  
*Sign Group*  
LLC

# Dimensional Sign Guide



CNC Routed HDU, PVC, Acrylic, Custom Brackets,  
Systems, Post Sleeves, Caps, Hardware,  
Dimensional Letters, & Specialty Finishes  
Custom 3D Signs



636.317.6100

[info@bakersigngroup.com](mailto:info@bakersigngroup.com)

# About Us

We have been producing beautiful 3D signs exclusively for signs companies and re-sellers for over 20 years. Our commitment to sign industry professionals sets us apart from others. We work with you to provide a quality product that will give your customers years of service at wholesale pricing. We provide technical information for installation methods and can supply you with hardware and brackets that are designed specifically for our products. Put our talented team of fabricators and artists to work for you and give your customers more of what they want--dimensional signs that stand out.

We are 100% wholesale!

# BAKER *Sign Group*

We look forward to showing you some of the many reasons why sign companies across the country choose Baker Sign Group LLC as their wholesale manufacturing partner.



# General Info



## What products do you offer?

We offer HDU (high density urethane), PVC, Acrylic, Digital Prints & Vinyl, Posts Sleeves, Caps, Finials, Hardware, Specialty Finishes, Letters, 3D Signs, and other sign substrates available upon request.

## What is HDU & what are the benefits of using that instead of wood?

HDU is high density urethane. It is a synthetic renewable foam that was originally designed by NASA for use on the space shuttles. Over the years it has found its way into several industries, including the sign industry. HDU is a completely closed celled material making it impervious to the outside elements. It is unaffected by water and will not warp, rot or crack. It is designed to handle extreme temperatures both hot and cold. HDU is molded in large blocks and then cut down into sheets, making it very consistent and reliable for CNC routing.

## Do you warranty your products?

Yes, our standard warranty is 5 years on paint finishes and craftsmanship. We are proud and confident in the work we do.

## How do you ship? Where do you ship?

LTL or UPS. We ship to continental U.S. plus Alaska and Hawaii. Please contact us if you are located in Canada or Internationally. An entire section of the facility is dedicated just to the fabrication of boxes, packaging, and shipping crates used to safely transport our signs from our facility to yours.

## What type of artwork files do you require?

We request that all files be sent to us in vector (AI, EPS, PDF). Orders needing digital prints should be scaled appropriately and at least 300 dpi. To streamline the process please have artwork requiring little to no revisions. If necessary, we do provide services to vectorize your designs at a fee.

## What colors do you carry?

We also carry our own stock colors that you can choose from. Or we can color match to Pantones, Matthews Paint Standard Colors, Sherwin-Williams, or any major paint supplier.

About Us .....	1
General Information .....	2
Recessed Text .....	3
Recessed Background .....	4
Standard Wood Grain .....	5
Standard Wood Grain Continued .....	6
Faux Painting & Texture .....	7
3D & Combined Textures .....	8
Letters, Logos .....	9
& Layers .....	10
Custom Paints .....	11
Digital Prints .....	12
Combo Substrates .....	13
Unfinished Options & Border Options .....	14
Other Substrates .....	15
Caps & PVC Post Sleeves .....	16
Hardware Options .....	17
Stock Paint Colors .....	18

## What are you terms?

All orders require a 50% deposit to begin production and 50% prior to shipment.

## How do I get an estimate?

Quote requests can be sent to [info@bakersigngroup.com](mailto:info@bakersigngroup.com). Please include as many details about the project as possible along with artwork if available.

## How do I place my order?

If you are already set up with a customer portal you can convert your estimate to an order directly through the portal. If you are a new customer, please email your order to your salesperson or [info@bakersigngroup.com](mailto:info@bakersigngroup.com). Please include final artwork along with color spec's and any additional information regarding the order.

# Recessed Text

CNC V-Groove



CNC Smooth Pocket



# Recessed Background

CNC Smooth Background



CNC Smooth & Pebble Background



# Standard Wood Grain

CNC routing gives you unlimited options when designing dimensional signs. We offer a variety different stock wood grain options, pebble textures and multiple specialties. We can also custom create textures upon request.



BSG Wood Grain #1



BSG Wood Grain #1-Modified



BSG Wood Grain #2



BSG Wood Grain #1-Modified



BSG Wood Grain #2



BSG Wood Grain #1-Vertical



BSG Wood Grain #1



BSG Wood Grain #1

# Standard Wood Grain



BSG Wood Grain #3



BSG Wood Grain #3



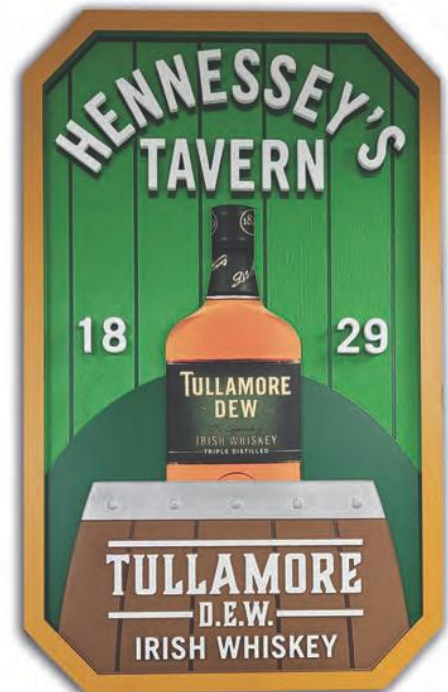
BSG Wood Grain #4



BSG Wood Grain #5



BSG Wood Grain #5



BSG Wood Grain #5 Vertical



BSG Wood Grain #4

# Faux Painting & Texture

Our team of designers and painters can create custom textures and faux finishes to suit your needs. We offer a variety of 3D design options to modify existing stock textures or create custom backgrounds. Our talented paint team can add faux finishing touches to make your project shine.



Chisel Texture



Custom Water Texture



Hammered Texture



Faux Wood Painting

# 3D & Combined Textures



Full 3D Routing with Added Letters and Stencil Painting



Combo Background with 3D Routing and Custom Faux Painting



Combo Background with 3D Routing

# Letters, Logos,



**MIDWEST**

*Wine Bar*

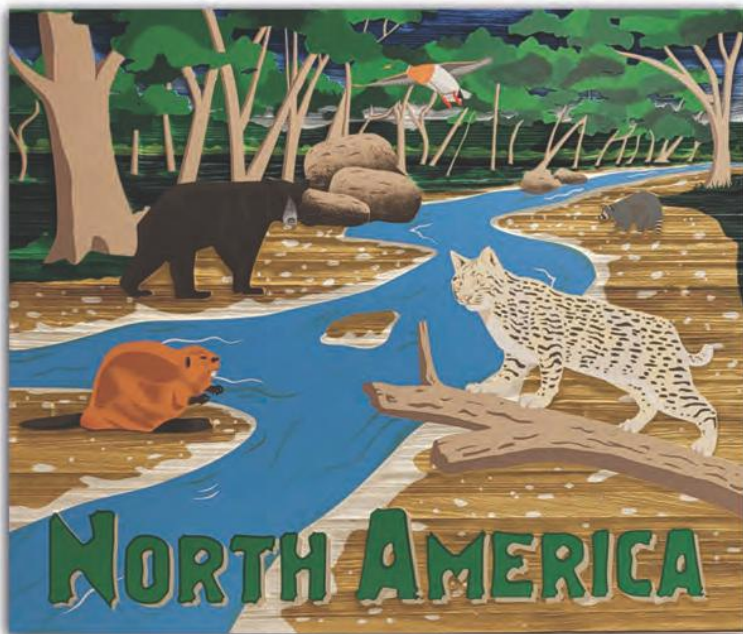


# & Layers



# Custom Paints

The finishing team at Baker Sign Group LLC has improved in our techniques and grown to complete projects that are hand painted with incredible detail. Whether it be multi layer stenciling or intricate hand painted backgrounds we got you. With our skilled painters we are prepared to recreate designs or extremely small or fine detail. We also offer digitally printed graphics if preferred.



# Digital Prints



# Combo Substrates



HDU and Digital Print on Aluminum Composite



HDU on Painted Aluminum



Brushed Aluminum Laminated on HDU



Acrylic on HDU with Stand Off's



Aluminum on HDU on Aluminum



Acrylic Backed Aluminum

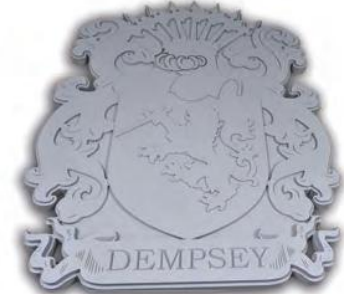
# Unfinished Options & Border Options

Baker Sign Group LLC can provide you with unfinished or primed only dimensional signs ready for your team to complete. We also offer finished blanks ready for your vinyl, graphic letters, aluminum signs or any other options you would like to add.

Unpainted



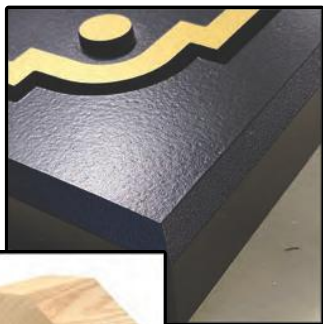
Primed



Painted Blanks Ready for Vinyl or Other Additions



Bevel



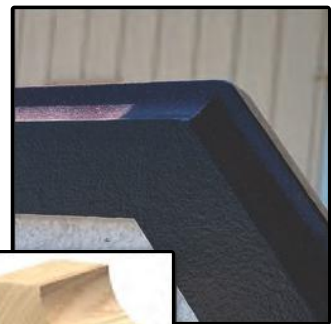
Custom Picture Frame



Round Over



Cove



# Other Substrates

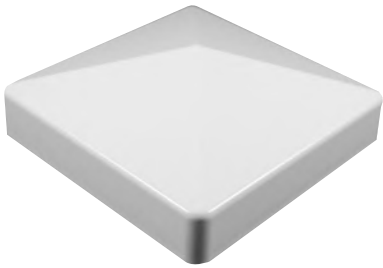
We can confidently produce dimensional signs from PVC. Also known as "Rhino Carve" these signs can be carved and painted in house. Along with PVC, we offer HDPE which is another versatile material ready to withstand harshest outdoor conditions. Other substrated available are Aluminum, Acrylic, and Aluminum Composite. Our team can guide you through the options for your project and help you decide the best material for the job!



# Caps & PVC Post Sleeves

You can choose PVC options or request HDU caps. PVC post sleeves come in a variety of widths and lengths, which our team can expertly paint for a final touch to your sign.

We also can provide finished or unfinished aluminum posts upon request.



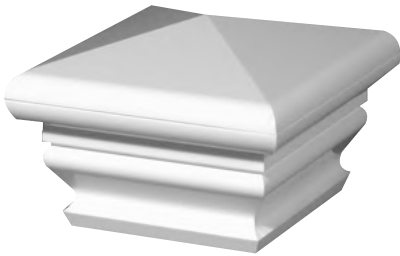
**External**



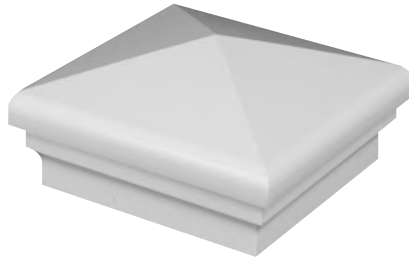
**New England**



**Cape May**



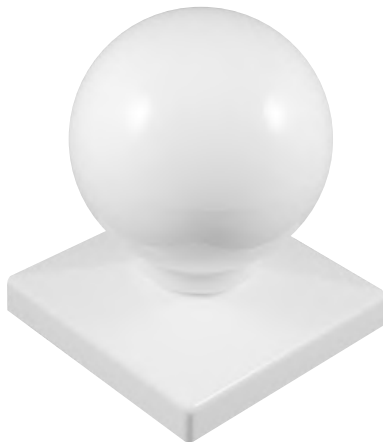
**Federation**



**Neptune**



**Haven**



**Ball**



**Gothic**

# Hardware Options

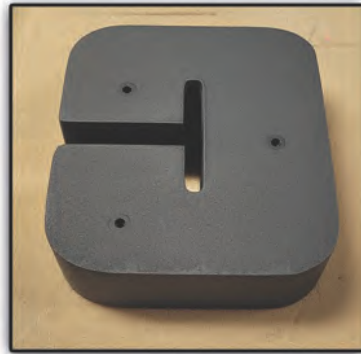
Baker Sign Group LLC has you covered when it comes to hardware for your products. We provide hardware from brackets, backers, and blind mounts to studs and pattern. We can also integrate custom supplied bracket systems if needed. Our team can assist in helping you find the best options for your project.



**Full Length King Clips  
(Hanger Bar)**



**4\"/>Standard King Clips  
(Hanger Bar)**



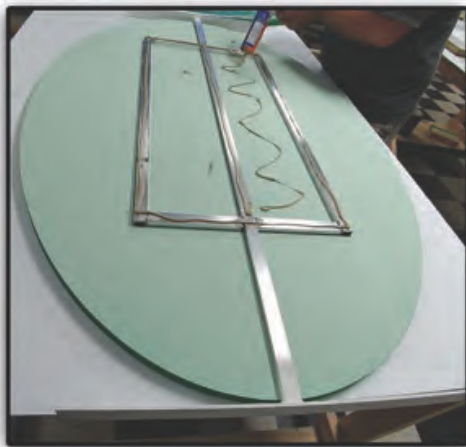
**Studs & Pattern**



**Mounting Angle  
(Vertical & Horizontal)**



**Side Brackets**

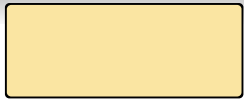


**Internal Frame with Side Brackets**



**Welded Eye Bolts to Frame**

# Stock Paint Colors



BSG Pale Yellow



BSG Red-Orange



BSG Sky Blue



BSG Dark Green



BSG Nutmeg



BSG Bright Yellow



BSG Red



BSG Light Blue



BSG Hunter Green



BSG Tan



BSG Yellow



BSG Berry Red



BSG Blue



BSG Green



BSG Antique White



BSG Sunflower Yellow



BSG Burgundy



BSG Dark Blue



BSG Nature Green



BSG Light Gray



BSG Mustard Yellow



BSG Dark Purple



BSG Pale Yellow



BSG Olive Green



BSG Blue Gray



BSG Light Orange



BSG Purple



BSG Indigo



BSG Bright Green



BSG Medium Gray



BSG Bright Orange



BSG Light Purple



BSG Dark Teal



BSG Dark Brown



BSG Dark Gray



BSG Dark Orange



BSG Light Pink



BSG Teal



BSG Brown



Black



BSG Ginger Beer



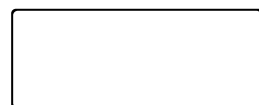
BSG Dark Pink



BSG Light Teal



BSG Light Brown



White

**\*\*Actual colors may vary slightly from examples due to limitations in the printing process\*\***

# Dimensional Sign Guide

**BAKER**  
*Sign Group*  
LLC

**Notes on Quotes:**

636.317.6100

info@bakersigngroup.com